

AITKEN SPENCE – TSUNAMI HOUSING PROJECT

(Volume III)

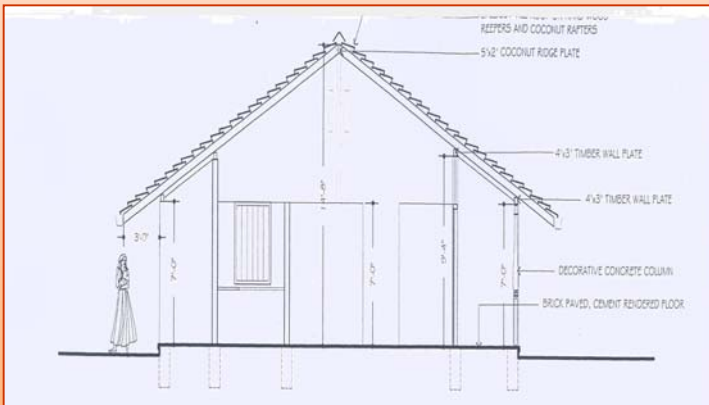
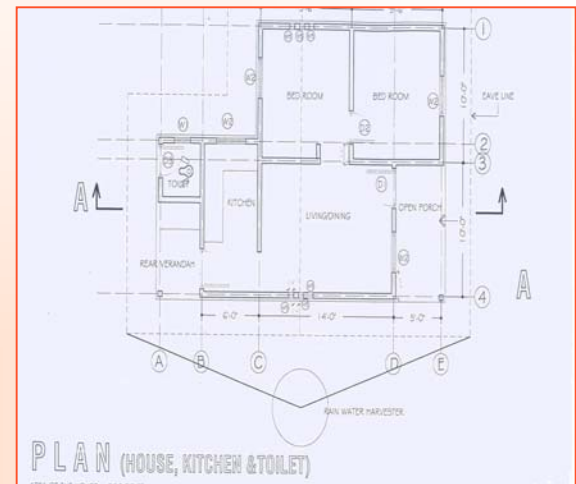
Aitken Spence & Co., Ltd. has taken proactive measures to secure the four plots of land in Ahungalla and Trincomalee. The memorandum of understanding (MOU) between company and UDA for the lands in Ahungalla is scheduled to be signed in early April. Apart from the basic housing, we have identified the needs of the people currently living in refugee camps and have customised the housing units in order to best suite their culture and style of living. In addition to supplying drinking water and other sanitary facilities with long-term development of the residents.

Revised Schematic Drawings.

The dwelling unit consists of

- 2 bedrooms.
- Kitchen.
- Porch.
- Rear verandah.
- Bathroom.
- Living & dining.

Each unit is approximately 520 Sq.Ft.. @ Rs 500,000 each, as per preliminary estimate, from ADV Consultants.



Project Sponsors

- Aitken Spence & Co., Ltd.
- TUI AG.
- The Principals and business partners, well-wishers & employees of Aitken Spence Group.
- Hartmann Reisen.
- The Government of the republic of Sri Lanka. (Sponsorship of land)

Current Situation....

- ♦ The memorandum of understanding (MOU) for the lands in Ahungalla, between Aitken Spence & Co., Ltd. and the Government is scheduled to be signed in early April.
- ♦ We have visited the future occupants of the houses (Currently living in refugee camps) in order to build trust with them.
- ♦ We have also visited a pre-school in Ahungalla which we hope to develop parallel to the housing project.
- ♦ The construction of houses in the Kumpurupiddy village in Trincomalee is scheduled to commence in early April.
- ♦ The survey and contour plans of the Ahungalla lands have been completed and submitted to Mr.Ashley De Vos for the preparation of settlement plans for the respective villages.

Katuwila Kanishta Viduhala – Ahungalla



A team from Aitken Spence visited the future occupants of the houses, currently residing in refugee camps in Pathirajagama. They distributed provisions among those families and inquired about their wellbeing. This was an immense source of reassurance for those people who have borne the brunt of the tsunami disaster. The team also visited a pre-school situated in the vicinity to get an insight of how best to improve the available facilities.



We have identified Katuwila Kanishta Viduhala situated in Katuwila, Ahungalla, as a potential pre-school, which is to be developed as a part of the housing project. This is a primary school which fosters the educational needs of a total of 32 students.

We hope to develop this primary school so as to enable it to accommodate students who will be occupying the villages in Ahungalla, which are situated in close proximity to the school.

Basic facilities such as toilets, school furniture, partition screens, storage cupboards, new/used computers and other necessities such as developing the play areas and the like were identified as area to be improved and developed.

Your ideas towards this worthy cause is indeed valued and appreciated. Please feel free to communicate your thoughts, suggestions and creative ideas to us by email to info@aitkenspence.lk or by Fax on **2307592**.

All monetary donations towards those affected, are gratefully accepted at :

Aitken Spence & Co., Ltd.- Tsunami Relief Fund
Account Number: 200008 103
Citibank,Colombo-7
Sri Lanka.
Swift Code- CITILK LX

Stakeholders intentions & contributions....

Hartmann Reisen with their counterparts in Germany, have pledged to fund the medical facility, pre-school, playground and community centre in the Kumpurupiddy village.

TUI has committed Euro 200,000 towards the housing projects in Trincomalee and Ahungalla.

The Total contribution by the staff of Aitken Spence Group and the Aitken Spence Sports Club is LKR 1.5 million.

